



Promoting Women in Physics in South Africa

Kate Shaw,
Sahal Yacoob

Abdus Salam International
Centre for Theoretical Physics,
University of Cape Town

*Women in Physics in South Africa
(WiPiSA)*

South Africa

- Population: 55.6 Million (2016)
 - 51% female
 - 36.2 % between 15 and 34
 - Access to Water: 85% (households)
 - Access to Electricity 90% (households)
 - First Democratic Election — 1994
 - 8.1 % White
 - 19.9% cannot afford food (households)
 - 25 - 35% unemployment
 - 54% below the poverty line



Images from LonelyPlanet.com

Women in Education in South Africa

- South Africa is still predominantly patriarchal
 - preference generally given to males
 - Many official policies in place encourage previously disadvantaged groups
- In 2011:
- 17% of University leadership were women (SET)
- 21% of Full Professors (SET)
- 40-44% of Natural and Agricultural Science Doctoral graduates are female
- 15-17 % Engineering Science, Materials and Technologies doctoral graduates

Diversity in Physics Academia

- ❖ Completely Anecdotal: I have been employed at two South African Universities:

Institute	A	B
Women	0/10	1/15
non-white South Africans	2/10 1/10	2/15 0/15

Encouraging a change

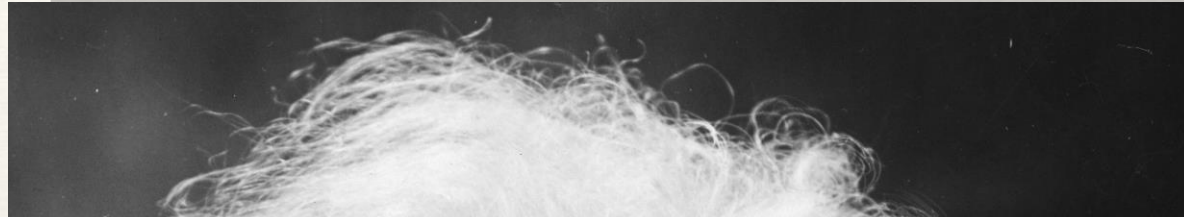


Photo credit: Gregor Leigh

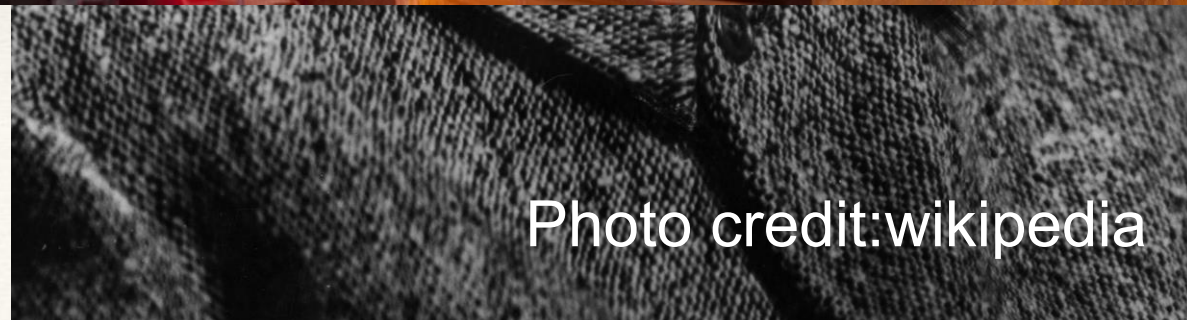
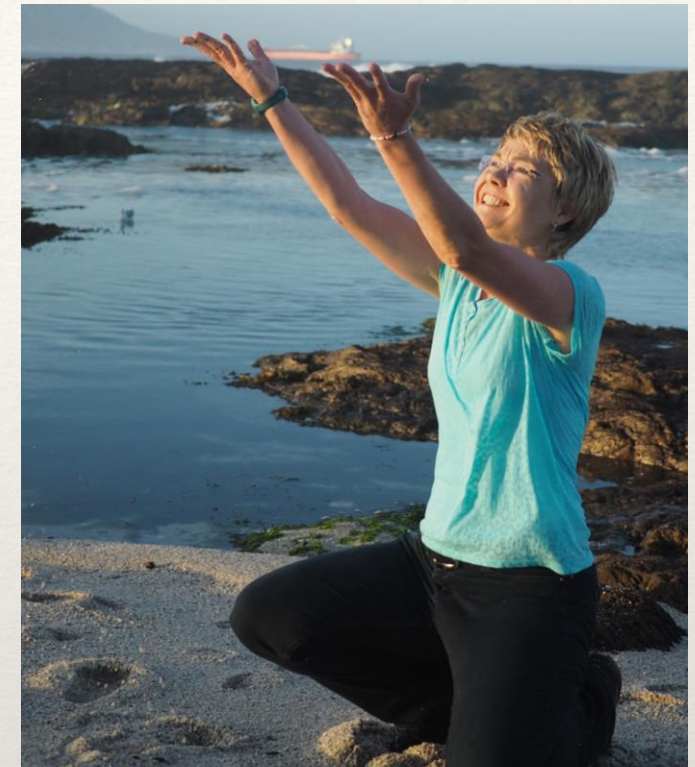


Photo credit:wikipedia

Our 7 Stars



Some Quotes

“Traditionally a woman's role is to stay home and take care of the house and kids. So you want to go to university, and do, what, with that degree?”

“I think they are intimidated by a woman, they cannot accept a woman doing better than them”

“When my mother wanted to go to school her dad said no. A woman who goes to school becomes undesirable. So women don't go to school, they must listen to their husbands. So that's how village people are raised. “

“If we have a boy and a girl and we have a bicycle then you'll find the boy always will have the first go, until he has had enough, then it's the girls turn. A girl can't be better than you, you know. It starts with the small things.”

